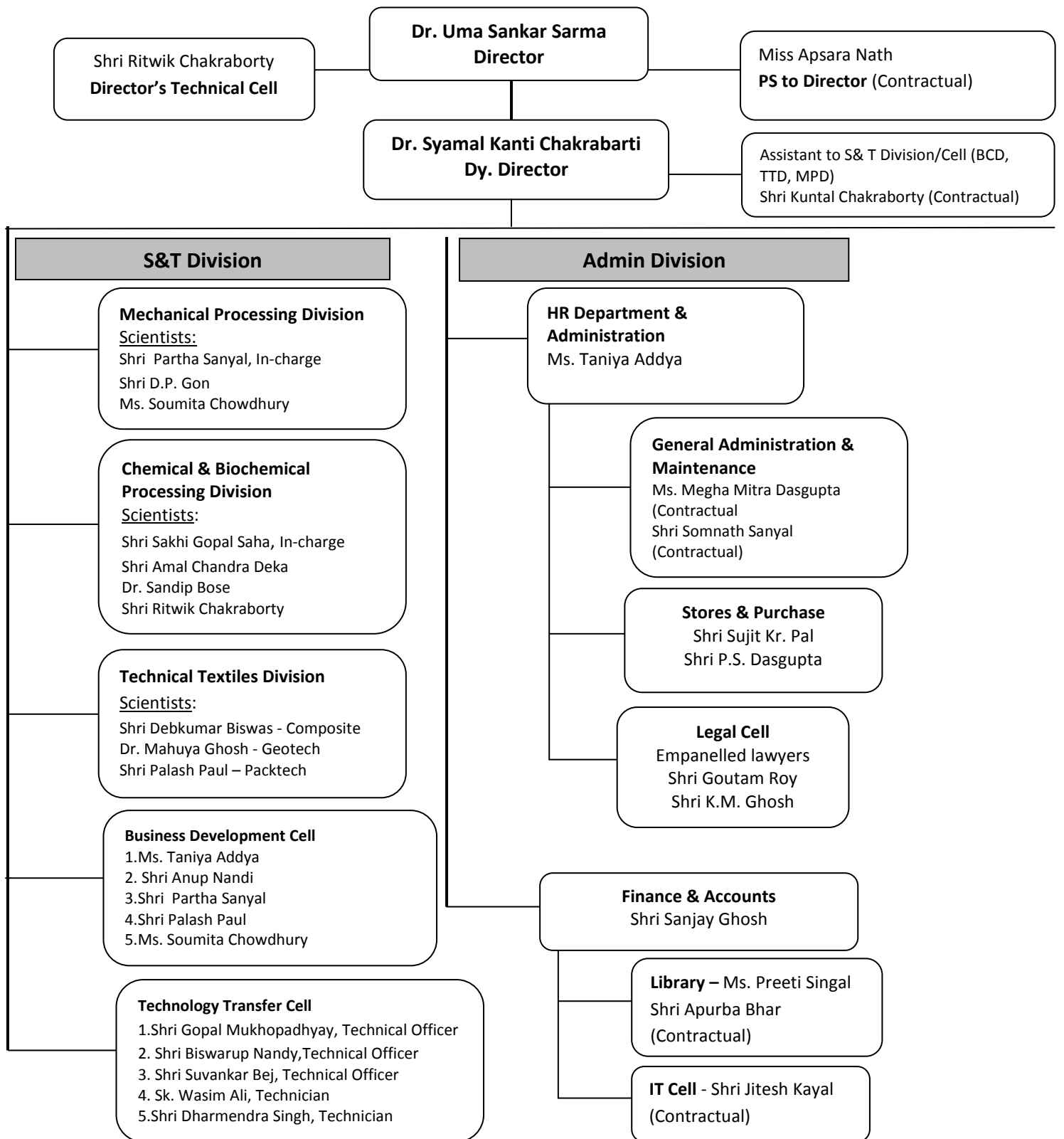


**STAFFING PATTERN OF IJIRA – AT A GLANCE**



Shri Ritwik Chakraborty  
**Director's Technical Cell**

**Dr. Uma Sankar Sarma**  
**Director**

Miss Apsara Nath  
**PS to Director (Contractual)**

**Dr. Syamal Kanti Chakrabarti**  
**Dy. Director**

Assistant to S& T Division/Cell (BCD, TTD, MPD)  
Shri Kuntal Chakraborty (Contractual)

**S&T Division**

**Mechanical Processing Division**

Scientists:

Shri Partha Sanyal, In-charge  
Shri D.P. Gon  
Ms. Soumita Chowdhury

**Chemical & Biochemical Processing Division**

Scientists:

Shri Sakhi Gopal Saha, In-charge  
Shri Amal Chandra Deka  
Dr. Sandip Bose  
Shri Ritwik Chakraborty

**Technical Textiles Division**

Scientists:

Shri Debkumar Biswas - Composite  
Dr. Mahuya Ghosh - Geotech  
Shri Palash Paul – Packtech

**Business Development Cell**

- 1.Ms. Taniya Addya
2. Shri Anup Nandi
- 3.Shri Partha Sanyal
- 4.Shri Palash Paul
- 5.Ms. Soumita Chowdhury

**Technology Transfer Cell**

- 1.Shri Gopal Mukhopadhyay, Technical Officer
2. Shri Biswarup Nandy, Technical Officer
3. Shri Suvankar Bej, Technical Officer
4. Sk. Wasim Ali, Technician
- 5.Shri Dharmendra Singh, Technician

**Admin Division**

**HR Department & Administration**

Ms. Taniya Addya

**General Administration & Maintenance**

Ms. Megha Mitra Dasgupta (Contractual)  
Shri Somnath Sanyal (Contractual)

**Stores & Purchase**

Shri Sujit Kr. Pal  
Shri P.S. Dasgupta

**Legal Cell**

Empanelled lawyers  
Shri Goutam Roy  
Shri K.M. Ghosh

**Finance & Accounts**

Shri Sanjay Ghosh

**Library – Ms. Preeti Singal**

Shri Apurba Bhar (Contractual)

**IT Cell - Shri Jitesh Kayal**

(Contractual)